



Dear Parents,

We have been doing a lot of work on our value of Kindness this week! Our Kindness Ambassadors, Martha, Lois, Emily and Chloe have been planning a few things for the whole school and Chloe and Emily even joined a zoom meeting with Ambassadors from other schools in the country to share great ideas. One of the initiatives that the Kindness Ambassadors have started this week is a Kindness Award for each class, voted for by the other pupils, which will be added to our weekly celebration assembly. We have also updated our Amazon Wishlist with some books based around the theme of kindness so that we can continue to encourage kindness all year round.

Today, Year 5&6 and 3&4 had an exciting trip to The Sheldonian in Oxford, enjoying a range of music and including participating with some beat boxing. A fantastic opportunity for all the children which the PTA funded in full.



Continuing on the musical note, every week I have been sharing different pieces of music with the children during our singing assemblies. These have been from different genres and spanning across centuries ranging from Mozart to Elvis with some Tango in between and much more. The children have enjoyed the wide range of music and learning a bit about the composer, where in the world they are from and the music. As we continue to explore different music I would be keen to share songs or genres that parents value and enjoy so please share any ideas you might have.

I wanted to draw your attention to the next Parent's Open Afternoon which will be taking place on February 5th between 1pm and 3pm. This will be two slots 1pm-2pm and 2pm-3pm. Please email the school at [enquiries@charltononon.co.uk](mailto:enquiries@charltononon.co.uk) if you would like to sign up for a slot.

We are looking forward to our Scooter Experience in March. If you have children in FSU as well as in other year groups, please make sure you read all the letters as the workshops for FSU will be delivered a bit differently to the rest of the school.

Finally a reminder that the PTA will be hosting a PTA café in the hall from 3pm today, I hope many of you can make it.

Wishing you a calm weekend, hoping the forecast rain and wind are not too disruptive for everyone.

Nadia Gosling

## Kindness Awards

*Lily H, Mabel, Thea, Aria, Miss Airey*



**Headteacher Award**  
**Samuel, Edie, Margot G**



## Our Stars of the Week

Lena

Camilla

Kai + Corey

Annabel

Felicity

Edie

Grace

## Class Attendance Winner

This week's best attended class is FSU with:

**99% attendance**

**Whole school attendance**

**97%**

Also, Well done to everyone for getting into school at 08:45. It makes such a difference!

## Breakfast Club & CAST

Drop & Play: Mon-Fri 8.15am-8.45am

8:30am—8:45am

Breakfast club: Mon-Fri 7.50am-8.45am

CAST times: Mon-Thurs 3.15pm-4.15pm or 3.15pm-5.30pm.

If you would like your child to attend Breakfast Club, Drop & Play or CAST, please book a place using the Arbor app.

All clubs are open to Reception through to Year 6 children only. If you could please try to get your clubs booked by **Midday**

**Friday** for the week ahead, so that snacks can be arranged. As our numbers are increasing, we may not be able to accept last minute bookings due to the adult ratio's required. Bookings made after 12pm on Friday will incur a £2 late booking fee per session booked.

Please also be mindful of pick up times, if you are late picking up your child you will be charged for the later session.

## Diary dates

- 30th Jan, 6th + 13th Feb—Yrs 3-6 Swimming
- 24th January—PTA Café 3pm
- 3rd February—Yr 5/6 Girls Football League
- 5th February— Skipping workshop
- 5th Feb—Parent Open afternoon 1-3
- 11th Feb Y1-6 Parents evenings 3:30 -5:30
- 12th Feb Rec -Y6 parents evenings 4-6:30
- 14th Feb—School of kindness workshop
- 24th Feb—Yr6 Junior citizens trip
- 25th Feb—Reception + Yr6 height, weight + vision screening



## PTA

Thank you to everyone who donated to the Rags2Riches collection. We raised £113.58! Thank you to the Eco Council for taking the time to come and see all the bags and hear where they're going to.



Please join us for tea and cake at the PTA cafe in the hall from 3pm this afternoon. There will be activity tables set up to keep the children entertained. We are looking forward to seeing many of you there.

If you have any items you want to donate to the PTA gift amnesty, please bring them to the café this afternoon.

## FSU

We have thoroughly enjoyed our topic this week based around the story of Elmer. We have explored the concept that each of us has characteristics that others should respect and appreciate. We also retold the story and ordered some pictures from the story that were muddled up, as well as practicing recognising and naming colours! In maths, Nursery children have been solving real world maths problems like how many plates and cups do we need for each person when setting up for snack time? Reception have been using the 5 Speckled Frogs song to introduce the different numbers bonds that can make 5.



## Year 1 & 2

Our Thrive assembly was really successful this week on teambuilding.

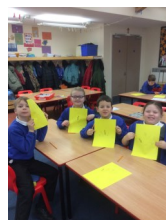
Last week, they created a detailed design in groups. This week they had thirty minutes to build their designs using anything in the classroom. They worked really hard in their groups and I was very impressed with their outcomes.



## Year 3 & 4

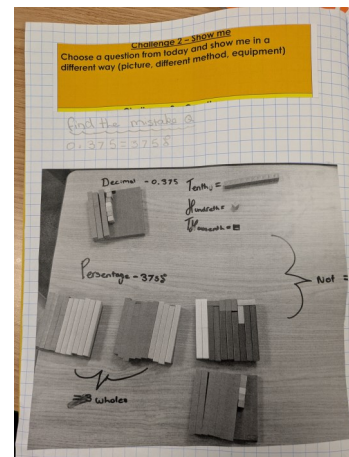
Year 3 and 4 thoroughly enjoyed our trip to the Sheldonian theatre to see the Schools' Concert. We learnt a lot about orchestral music, instruments and beat-boxing!

On Thursday morning we voted for two members of the class to receive a special Kindness Award and gave reasons for our votes. We also completed a lovely activity in which children drew around their hands and their friends wrote kind descriptions about them on each finger. It was wonderful to see how delighted the children were with the words their friends chose!



## Year 5 & 6

This week, everyone has worked really hard on their maths work with understanding fractions, decimals and percentages. We have used practical resources to help represent different fractions and to show how they are all equivalent.



## Safeguarding

Please contact Mrs Clarke, Miss Giles or Mrs Gosling should you have any safeguarding concerns.

# Forest School



If anyone has any willow or large branches for Forest School activities, it would be very much appreciated!

Thank you!

